

Expression of Interest.

Subject- To invite Expression of Interest from Original Equipment Manufacturer /Vendor / Distributor to supply of Colour Doppler Echocardiography System for Dept of CVTS KEM Hospital through MPLAD Fund

King Edward Memorial Hospital is one of the leading tertiary care, public hospitals in the metropolis of Mumbai that provides basic as well as specialized services to needy patients from all over the country. With a glorious legacy of 96 years and currently catering to over 1.8 million out-patients and 85,000 in-patients annually, the institute is among the top ranked medical institutes in India. The CSR Wing of the Social Service Department has been working hard to raise funds to procure advanced medical equipment for various medical and surgical specialty and super specialty departments of KEM, with the objective of providing state of the art facilities to the underprivileged sections of our society.

Through MPLAD funds, we wish to purchase a Colour Doppler Echocardiography System for Dept of CVTS KEM Hospital.

For purchase of the above equipment, it is proposed to invite "Expression of Interest" from Original Equipment Manufacturer /vendors / Distributor, to supply the same to KEM Hospital. To supply Colour Doppler Echocardiography System, Original Equipment Manufacturer /vendors / Distributor should purchase a form, from Poor Box Charity Fund, KEM Hospital from 10/01/24 to 19/01/24 in working hours and all proposals with the required documents should be submitted on or before 19/01/24 (by 1.00 pm) in the Department of CVTS, CVTC Building, ground floor KEM Hospital, Parel, Mumbai 400012. With Two packet System (i.e. Packet A is a Administrative & Technical Documents & Packet B is a commercial) do not disclosed the price other than commercial packet. The packet will be open in front of Heart Transplant Committee as per schedule decided by committee.

BRIHANMUMBAI MUNICIPAL CORPORATION OF GREATER MUMBAI

**King Edward VII Memorial Hospital,
CSR Wing, Social Service Department,
Parel, Mumbai 400012**

**Specifications For Colour Doppler Echocardiography System for Dept Of CVTS Kem
Hospital**

	Description
Name of Equipment	<u>Colour Doppler Echocardiography System for Dept of CVTS KEM Hospital</u>
Specification of Equipment	Attached to ANNEXURE IX

BRIHANMUMBAI MUNICIPAL CORPORATION OF GREATER MUMBAI

King Edward VII Memorial Hospital,
CSR Wing, Social Service Department,
Parel, Mumbai 400012

General Conditions :

Warranty period	Comprehensive warranty on equipment and all spares shall be three years. Inclusion and exclusion of Warranty documents should be clearly stipulated.
CMC	<u>Comprehensive Maintenance Contract (CMC)</u> 1) After the warranty period of 3 years is over, five years Comprehensive Maintenance Contract (CMC) will have to be entered into with the terms and conditions mentioned in the documents as per BMC norms. List of spare parts / consumables will be submit by supplier with cost freeze in advance for the warranty and CMC period. 2) The successful supplier must ensure that all the required spares/consumables and services are available during warranty and CMC period and 2 years after that, duly backed by the principal.
<u>Delivery & Installation Period</u>	1) Supplier should give free delivery at user department of KEM Hospital within 30 days or as soon as possible from the date of receipt of purchase order. 2) Installation and commissioning of equipment shall be done within 7 days from the delivery of the equipment.

BRIHANMUMBAI MUNICIPAL CORPORATION OF GREATER MUMBAI

King Edward VII Memorial Hospital,
CSR Wing, Social Service Department,

Parel, Mumbai 400012

**GENERAL
REQUIRE
MENTS:**

- 1) Price should include GST charges & any other charges (Supplier needs to submit basic cost of equipment and GST rate in prescribed format).
- 2) The above equipment shall be new and manufactured from virgin materials.
- 3) It is mandatory to provide free installation & training for use of equipment.
- 4) The equipment should have warranty of three years as described in the terms and condition document. The warranty and CMC shall cover the list of spare parts and the rate of which shall be valid for total 8 years (warranty 3 years and CMC 5 years) irrespective of whether those are treated as consumables or otherwise.
- 5) After the warranty period is over, five years Comprehensive Maintenance contract (CMC) will have to entered into with the terms and conditions mentioned in the documents as per BMC norms. List of spare parts / consumables will be submitted by supplier with cost freeze in advance for the warranty and CMC period
- 6) It should be European CE certified along with declaration of conformity or USFDA approved.
- 7) 3 years comprehensive warranty followed by 5 years comprehensive maintenance contract.
- 8) Demonstration of quoted model is compulsory and to be given at an end user site.
- 9) User list with address and phone number to be provided
- 10) The Successful supplier must ensure that all the required spares/consumables and services are available during warranty and CMC period.
- 11) All the requirements of this supply shall be sourced from the original equipment manufacture of the model quoted
- 12) Power supply: 230 V, 50 Hz. The main supply voltage variation may be maximum 15% and frequency variation maximum 3%.

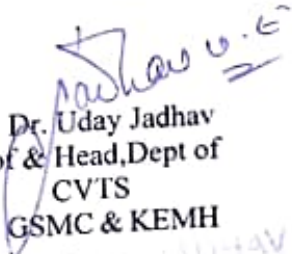
BRIHANMUMBAI MUNICIPAL CORPORATION OF GREATER MUMBAI


King Edward VII Memorial Hospital,
CSR Wing, Social Service Department,
Parel, Mumbai 400012

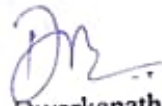
- 13) The equipment shall have valid CE mark / US FDA approved and documentary evidence to that effect needs to be submitted.
- 14) Training to Medical Electronics Cell Engineers from servicing point of view and to user department from operating point of view is compulsory.
- 15) Supplier should submit all technical details in the form of technical brochures / leaflets for all the equipment proposed for supply and mentioned in the technical offer.

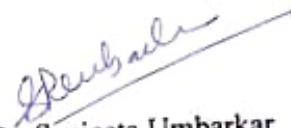
The supplier should submit documents mention in chek list attached herewith.

If any doubts or any query about above mentioned work, you can contact Heart Transplant Committee / Dept of CVTS, KEM Hospital, Parel, Mumbai - 400012.


Dr. Uday Jadhav
Prof & Head, Dept of
CVTS
GSMC & KEMH


Dr. Ajay Mahajan
Prof & Head, Dept of Cardiology
GSMC & KEMH
Department of Cardiology
SETH, GSMC & KEMH,
Parel, Mumbai - 400 012.


Dr. Dwarkanath Kulkarni
Prof & Head of unit,
Dept of CVTS
GSMC & KEMH


Dr. Sanjeeta Umbarkar
Prof & head, Dept of Cardiac Anaesthesia
GSMC & KEMH


Dean,
GSMC & KEMH

Dr. Sanjeeta Umbarkar
Professor & Head Of Dept.
Cardiac Anaesthesia
Seth G. S. Medical College &
KEM Hospital Mumbai.

Dean, K.E.M.H. & Seth G.S.M.C.,
Parel, Mumbai - 400 012.

BRIHANMUMBAI MUNICIPAL CORPORATION OF GREATER MUMBAI**King Edward VII Memorial Hospital,****Department of cardiovascular and Thoracic****surgery, Parel, Mumbai 400012****Check list of Documents to be submitted as per the order given below.**

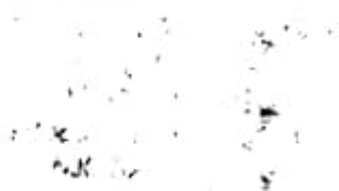
Sr No	Administrative Documents	Sr. No.	Technical Documents
1	Authorization Certificate	1	Technical Offer
2	Undertaking about CMC for 5 year after 3 year warranty period is over will be follows as per BMC norms	2	List of Consumables (Applicable in Warranty & CMC Period)
3	Signed copy of Terms & Condition of EOI Document	3	Comparison of EOI specification v/s Quoted equipment specification
4	Firm/Company/ Sanstha Registration Certificates	4	Experience Certificate
5	Partnership deed (If applicable)	5	Past Performance Certificate of Quoted Equipment.
6	Pan Card with Photograph.(Only for Indian Bidder)	6	Copy of valid CE certificate OR copy of valid USFDA approval as mentioned in General Conditions (Technical specifications).
7	GST Registration Certificate as applicable	7	Technical brochure of quoted model
8	Import / Export license issued by competent authority(if applicable)	8	List of Spare Parts (Applicable in Warranty & CMC Period)
9	Power of Attorney to sign the tender		
10	Special Annexure for GST		
11			
12			
13			
14			

**Authorized Signature of the Bidder
with Official Seal & Address**

Technical Specification for 3 D Echocardiography and Ultrasonography Machine with Adult TTE and 4D TEE, and Pediatric Probes (optional)

1. System must be a state of the art model with all digital beam former with super computed signal processing and clinically proven imaging technologies. System quoted must be at highest end.
2. System must be offered with the following applications: Adult and Pediatric 3D TEE application separately.
3. The system should be light weight and economically designed
4. System must be offered with a minimum of 900000 digital processed channels per image frame. Original technical data sheet should be enclosed in the technical bid to support the number of channels on the systems. If not mentioned Please attach a letter from manufacturer along with the technical bid clearly stating the Channels of the offered system.
5. System must be offered with a min 15 inch High Resolution Integrated Flat Panel Display monitor with High resolution.
6. System must be offered with frequency compounding facility. Other equivalent Technology can also be offered. Processing technology in technical bid should be highlighted.
7. System must be offered with 2D and 3D, M – mode, Colour M- mode, Anatomical M-mode (On Stored Images), Colour Flow, Pulse Wave Doppler, continuous Wave Doppler and Directional Color Power Doppler.

8. System must be offered with Speckle Reduction Imaging: Image processing technique to remove speckles and clutter artifacts
9. System must be offered with a very high dynamic range of at least 250 dB to pick up subtle echoes. Original technical data sheet should be enclosed in the technical bid to support the Dynamic range in dB. If not mentioned Please attach a letter from manufacturer along with the technical bid clearly stating the dynamic range of the offered system.
10. Frequency processing facility for the transducers should be 1 - 15 MHz. This must be available without the need for frequency switching.
11. Offline Measurement and Zoom capability.
12. Trolley with all Probe Connectors
13. Triplex Imaging should be standard on the system.
14. System must be offered with an 2D frame rate of at least 1000 frames/second. Acquisition frame rate should be clearly mentioned in the technical quote If not mentioned.
15. Must be offered with a single button control for automatic optimization and adjustment of TGC and Receiver Gain to achieve optimal uniformity of image quality and faster scans. This should be demonstrated to the users in Cardiology and vascular exams during technical discussions.
16. System must be offered with Enhanced Tissue Harmonic Imaging and should be standard on the system. This should be based on a real - time digital signal storage and phase cancellation technique to enhance axial and Contrast resolution.
17. The system should Three Probe Port Connectivity



18. System should have extensive image management capability including thumb nail review, Cine loop editing. Following should be provided with the machine
- 1) Adult Cardiac Matrix Probe 1.5 - 4.6 MHz
 - 2) Adult 3D TEE with Customizable TEE Probe button
19. Machine should be CE Europe / US FDA/equivalent ISO standards approved.
20. Eqpt must have at least 3 years warranty and 5 years CAMC thereafter.
21. TEE Probe should be covered minimum for 1 year of warranty from the date of installation.
22. TEE probes rates are to be declared in consumables list for purchase post warranty if required.
23. Below probes price must be quoted as part of consumables list. –

Adult and Pediatric TEE

24. Five years CMC is required after completion of warranty period is over
25. Price should include supply and installation
26. Technical support, spares and consumables should be provided as needed, for 7 years after warranty period is over.
27. For price evaluation, the cost of equipment+ accessories asked for will be considered.
28. Please quote separate prices for all modules, and the basic monitor unit. The exact numbers of each module may be varied.
29. All software upgrades should be provided free of cost during the period of warranty and CMC
30. All modules should be defibrillator- and surgical diathermy proof.
31. The system should follow international safety standards for medical use viz marking US FDA and European CE
32. Past performance certificate should be provided as per tender specifications.
33. User list to be provided with contact numbers.
34. Demonstration is compulsory and within 15 days of intimation.

4.12 MO Disc - 10

5 Environmental factors

SI	Name	Technical Specs quoted by bidder	Bidders Deviation if any
5.1	The unit shall be capable of operating continuously in ambient temperature of 300 C and relative humidity of 80%		
5.2	Pre Requisites should be clearly spelt out in terms of room requirements..		

6 Power Supply

SI	Name	Technical Specs quoted by bidder	Bidders Deviation if any
6.1	Power input to be 220-240VAC, 50Hz fitted with Indian plug		
6.2	Resettable overcurrent breaker shall be fitted for protection		
6.3	Suitable Servo controlled Stabilizer/CVT		
6.4	UPS of suitable rating with voltage regulation and spike protection for 30 minutes back up..		

7 Standards, Safety and Training

SI	Name	Technical Specs quoted by bidder	Bidders Deviation if any
7.1	Should be FDA or CE approved product		
7.2	Electrical safety conforms to standards for electrical safety IEC-60601 / IS-13450		
7.3	The product shall comply to IEC 60601-2-37 ed1. Medical Electrical Equipment - Part 2-37: Particular Requirements for the Safety of Ultrasonic Medical Diagnostic and Monitoring Equipment		
7.4	Type of protection against electric shocks -- Class I Degree of protection against		

electric shocks for ultrasound probes Type "BF"
For ECG electrodes Type 'CF'

7.5 Manufacturer/Supplier should have ISO certification for quality standards.

8 Documentation

SI	Name	Technical Specs quoted by bidder	Bidders Deviation if any
----	------	----------------------------------	--------------------------

- 8.1 User manual in English
- 8.2 Service manual in English
- 8.3 List of important spare parts and accessories with their part number and costing available in stock with the supplier.
- 8.4 Certificate of Calibration and inspection from the factory
- 8.5 Log book with instructions for daily, weekly, monthly and quarterly maintenance checklist. The job description of the hospital technician and company service engineer should be clearly spelt out.
- 8.6 List of Equipments available for providing calibration and routine Preventive Maintenance Support. as per manufacturer documentation in service/technical manual.

Kanak N. Nagle
2

J. V. Khandekar
DR. JAYANT V. KHANDEKAR
PROF & HEAD OF THE DEPT. OF C.V.T.S.
L.T.M.M. College & L.T.M.G. Hospital,
Sion Mumbai - 400 022.

K. N. Nagle
30/12/23

Dr. L. T. M. M. ...
Dr. ...
Dr. ...
Dr. ...

Dr. KANAK N. NAGLE
Prof. & Head
Dept. of C.V.T.S.
B.Y.L. Nair Ch. Hospital
Mumbai-400 008.